

WANOSCG

The Official Bulletin of the
Western Australian Native Orchid
Study & Conservation Group



Issue 6 - August 2022



IN THIS ISSUE

- President's Musings
 - July's informal meeting
- ADORP News
- Field Trips
 - Perth metro field trips
 - Wheatbelt Ashes Tour
- Field Trip Reports
 - Stirling Range, Southern Rivers Group
 - Shell Collection
 - Weedy Orchids
 - Pink Bunny Orchids
- A Journey through NOSSA and the Wild Orchid Watch (August presentation information)
- Flowering this month
 - Starved of Orchids
- The Spider and the Wasp
- Notices
 - Next meeting
 - Bulletin – call for articles
 - Copyright and disclaimers

WANOSCG Management Committee:

President:	Jon Warren
Vice President:	Ramón Newmann
Vice President:	Andrew Brown
Secretary:	Pat Richards
Treasurer:	Jay Steer

Ordinary Committee Members:

John Ewing, Kevin Uhe, Debbie Proudfoot
Peter Proudfoot, Graham Warren

Subsidiary Positions:

Field Trip Coordinator:	Graham Warren
Metro Field Trip Coordinator:	Christine Lock
Conservation Officer:	John Ewing
Membership Officer:	Jay Steer
Branch Liaison Officer:	Jon Warren
Bulletin Editor:	Annie Bowerman
Librarian:	John Ewing & Alison Higgins
Supper Coordinator:	Trish Newmann
Website Administrator:	Ramón Newmann
Facebook Administrators:	Graham Warren & Nathan Piesse

PRESIDENT'S MUSINGS

Great to see so many people contributing articles for the bulletin, photos on Facebook, volunteering to lead field trips and submitting some fabulous logo ideas.

Our first try at an informal meeting in July wasn't without hitches, but seemed to go well once David Edmonds was finally able to give his excellent talk on the Walpole Bioblitz.

After a few announcements and even fewer personal field trip stories, there were plenty of conversations and catching up with colleagues over the lovely supper provided by Dave Lawson. In particular, his home-made cheese sticks certainly gave the palate a kick. In fact, we ended up herding the last of folk out of the building so we could get home.

Email: wanoscg@gmail.com Website: www.wanoscg.com
Postal: PO BOX 323 VICTORIA PARK WA 6979

July's Informal Meeting

The problem with getting the computer and Zoom set up highlighted the problem with WANOSCG having the skill sets needed to run our business only one to two-people-deep and, when circumstances determine that only one person (yours truly), who supposedly knew how to set the tech up, ended up being at the meeting. That knowledge had only been from a briefing at the last meeting, and he forgot a couple of key steps that resulted in mayhem, but eventually we got there.

However, it would be great if, at some subsequent meetings, a couple of vaguely tech savvy members were to pop over to get the run-down on the computer and running a Zoom meeting in order to give us a bit more skill set depth.

That said, the trauma of trying to work out why the system wasn't working, and solving the issue, has burnt the process deeply into my psyche, so it will be unlikely that I will get it wrong again ...but then circumstances just might dictate that I cannot make it to the next meeting!!!!

Finally, I would like to welcome all our new members this year with a special thank you to those who have jumped straight in and made contributions to the logos, Bulletin and Facebook.

Jon Warren, President



ADORP NEWS

Kevin Uhe, ADORP Leader

With the recent end of the financial year 6,572 volunteer hours were recorded for the period with a cumulative total of 31,039 hours since the project commenced. Once again a terrific effort by all involved and 58 people will be eligible for the DBCA annual volunteer awards. These awards are usually posted out in early to mid-August each year.

The *Thelymitra apiculata* survey has been completed with an increased number of plants being recorded this year and thanks go to a number of people who kindly passed on location information to the team.

From reports from other teams, it seems it might turn out to be a very good year as far as plant numbers go with good numbers of leaves being found and early signs of flowers for the early flowering species.

The new volunteer uniforms are having a positive effect with the general public as it gives us an identity that people can relate to when surveying in popular areas. People seem more inclined to communicate once they see the uniform and it has provoked an interest in what we are doing.



Cleopatra's Needles
Thelymitra apiculata

FIELD TRIPS

Graham Warren, Field Trip Coordinator

Wheatbelt Ashes Tour

Weekend of 27-28 August – Bruce Rock, to be led by Robin Campbell down Corrigin way.
(See Robin's article – Bruce Rock, Corrigin and Kondinen, page 5.)

Great Southern Highway

Sunday, 18 September, led by Peter Gee, to the Great Southern Highway/Talbot West Road/Helena Road area.

Hyden Area

We are gaining interest in the suggestion for a field trip around the Hyden area to be held during the week on 20 and 21 September and we are looking for more expressions of interest.

Scarp Road near Dwellingup

Sunday, 25 September – to be led by Andrew Brown.

Please email me on [redacted] if you are interested in any of the above and I will confirm with the relevant field trip leader (FTL) to confirm if we have numbers.

Potential Day Field Trips:

Ramón has looked over some of Noel Clarke's information and has suggested that some trips be organised retracing some of Noel's treks in memory of him and to see if the interesting range of orchids found at those sites are still there. Therefore, we are looking at some potential day trips listed below.

1. Along the Brookton Highway:
 - Can be held in the months of September/October more than one trip possible here.
2. North of Brookton Highway, a trek along Yarra Road and surrounding areas.
 - Can be held in the months of September/October more than one trip possible here.

Further good news is that **Andrew Brown** has also put his hand up to lead a field trip on Sunday, 16 October, in the Brookton Highway area and again for October or early November in the Denmark area. Notification of meeting time/place will be closer to event time; just give me indications of who may be interested.

...but don't let these stop you and others from volunteering to be an FTL. Email me on the coordinator's email, [redacted], if you are interested, including dates you would like to lead, and I will confirm the details with you once we have sufficient numbers interested.

Important:

When emailing re field trips, please make the field trip name the subject of email and give all your details, these being:

1. Your phone number
2. Your emergency contact's name and phone number. Your emergency contact should not be someone who is travelling on the trip with you.

Dates to Reserve:

Reserve the weekend of 1 and 2 October in your diary as we have two possible events to happen that weekend:

1. We are planning to having a look at the burnt area of the Korung National Park, Canning Mills, on one of those days, followed by an informal meeting and picnic at Peter and Deb Proudfoot's place in Roleystone that evening. BYO food and drink and seating. Confirmation of day and times will be published closer to the event.

2. The Walpole Wilderness BioBlitz survey is on again on that weekend as well and please note we had one of the organisers (David Edmonds) speaking at our July meeting. The Walpole Wilderness BioBlitz is a citizen science-based event that will record as many species as possible over one weekend in October. The Walpole Wilderness Area is the only gazetted wilderness in Western Australia.

PERTH METRO FIELD TRIPS

A big thank you to the two volunteers willing to take on a metro field trips in the following months.

- Felix Nichols is willing to take a field trip to the **Armadale Settlers Common** on Sunday, 21 August; anyone interested please email me so we can co-ordinate the numbers.
- Geoff Foley has offered to take a field trip to **Adams Reserve and nearby Viridian Reserve in Wanneroo** on Monday, 5 September.

Please email me on [REDACTED] if you are interested and I will confirm dates once we have sufficient numbers interested.

On a personal note, I have had to cancel my trip away due to illness of a family member. If I don't get back to you straight away, I apologise, but I am tied to being at a hospital in support but I will eventually get back to you.

In the meantime, happy orchid hunting and stay safe.



Orchid Seekers
Image courtesy of Robin Campbell

OUT

OF THE

ASHES

Compare adjoining sites divided by a successful ploughed firebreak

A Granite Rock promising early flowers.

Check the pollination rates for the Pygmies, Bunnies and Winter Spiders

Almost pristine sites of woodlands, dense thickets and low shrublands on clays, loams, sands, laterite & quartz.

Who are the pollinators and predators?

Firestorm to Ashes Reserve
Bare earth and black sticks remained.
Wavy Bunnies flowered in April and set seed. Bluebeards Shells and Snails flowering now. 100s-1000s of leaves hopefully in bud or out by late August.

Accommodation: B&B, camping, chalets, farm-stays, hotels or motels

BRUCE ROCK - CORRIGIN RECOVERY



Is Pterolocera eating Pterostylis?



What are these hybrids?



100% pollination



JOIN THE SEARCH: Guaranteed discoveries and what will those leaves be?
BRUCE ROCK, CORRIGIN, KONDINEN & KULIN
Wheatbelt Ashes Tour with Robin Campbell (see Field Trips page 3)

FIELD TRIP REPORTS

SOUTHERN RIVERS GROUP

Field Trip Report - Stirling Range, 2 July 2022

Val Hack

Our field trip, with the aim of checking out the early winter orchids of the Stirling Ranges, started with a very crisp two degrees.

The first stop was about halfway to our destination. Lots of leaves and eventually one donkey orchid almost out in flower, possibly *Diurus brockmanii* (south coast donkey orchid).

Next stop was a flat area with a beautiful view of the Ranges in the background. Here we found a lovely fresh group of *Pterostylis dilatata* (robust snail orchid)

On into the ranges, we stopped for morning tea. A search of this area yielded *Pterostylis angusta* (narrow-hooded shell), *Corybas recurvus* (helmet) and *Cyrtostylis robusta* (mosquito), not yet out in flower.

Now off to the west near the edge of the park we found a lovely *Diuris* (donkey orchid) possibly an unnamed species.

Following a stop revealing leaves and promises of things to come, but no more to add to our list, we enjoyed lunch with a magnificent view from the Mount Trio parking area.

After a lovely day of sunshine, we headed home with several stops on the way. These revealed *Pterostylis concava* (cupped banded greenhood), *Cyrtostylis robusta* (mosquito), these ones out in flower, and *Pterostylis sargentii* (frog greenhood).

I wish to thank Krystyna and Anna for their help and guidance.

Note from Anna de Haan (SRG Branch convenor)

A very big thank you to both Krystyna and Val for taking on the leadership of a complete field trip including the paperwork. The SRG Branch is asking all regular attendees to take on the field trip leadership role of one field trip this year to spread the load. With Val's attention to detail, none of us will forget to spray our boots with metho again at every stop.



Mosquito Orchid
Cyrtostylis robusta



Narrow-hooded Shell
Pterostylis angusta



Unnamed Donkey Orchid
Diuris sp

2022 SHELL COLLECTION

Lisa Wilson

The genus *Pterostylis* includes hooded greenhoods known as 'shell' orchids. Many shell orchids have been flowering since May this year and some will continue until September. During the 'golden hour' when the low winter sun catches their translucent flowers, shells glow like lanterns. This is a brief account of the season to date.

On the Albany Windfarm coastal walk from May to July, *Pterostylis rogersii*, (curled tongue shells) are to be found by the path growing in grasses in white sand on limestone. This part of the Bibbulmun walk is along windswept cliffs, a harsh environment in which to grow.



Slender Shell Orchid
Pterostylis angusta

P angusta, (slender shells) have appeared in a variety of spots, from Cranbrook to the Stirling Ranges often in open scrub. They are more slender and, from the side, their shape is reminiscent of a person with hunched shoulders.

Just north of Williams, we visited a colony of *P hamiltonii* (red-veined shells), which are an inland shell similar to the *P rogersii*. This population is in wandoo woodland on the lower end of a slope.

Near Jurien Bay, *P microglossa*, 'Kalbarri shells', grow under peppermints in sandy clay. They have striking green and brown stripes which match their bold stance.

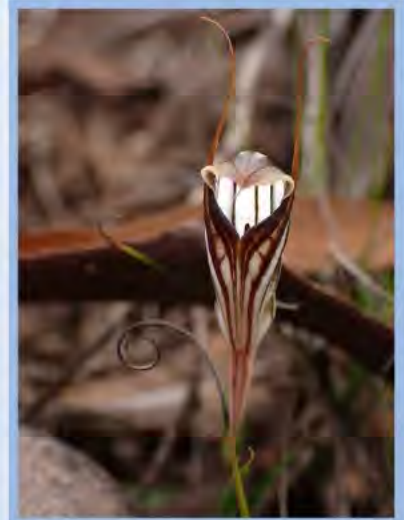
Stack Cooper reserve at Moora has listed *P aspera* (brown-veined shells). We found *Pterostylis* there but identifying this orchid was tricky. Although some

features, such as height, shape and leaf spacing were distinctive - others, such as the 'tongue,' were hard to pick from *P scabra* (green-veined shells), with which they are known to hybridise.

Many *P scabra*, were growing in dense colonies at Candy's Reserve. We witnessed these colonies in Hyden last year, with square metres of ground covered with flowering plants.

In Lake King, we saw a beautiful patch of *P brevichila* (dwarf shells), in an area of tiny, non-flowering rosettes. They had an attractive deep olive stripe. Their rosette leaves were more spaced out and had visible stems. They were grouped around the base of a mallee eucalypt in sandy clay soil.

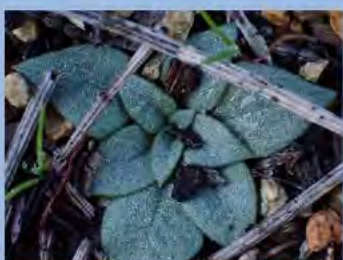
It would not have been possible to see these orchids without the help and support of friends we have made through being a member of WANOSCG. Mel George, Varena Hardy, Kevin Uhe, Nathan Piesse, Anna de Haan and June Scott have all shared advice and spots, and we met Gail Read (ex-WANOSCG) who kindly gave us a *P scabra* tour at Candy's reserve. It is wonderful to be part of a group of like-minded enthusiasts.



Dwarf Shell Orchid
Pterostylis brevichila



Green-veined Shell Orchid
with rosettes
Pterostylis scabra



Non-flowering rosettes
from left
Pterostylis rogersii
Pterostylis brevichila
Pterostylis microglossa

WEEDY ORCHIDS

Alex George

There are umpteen definitions of a weed, most implying a plant that is not wanted. Among many in my garden I have several that I'm pleased to see – some native orchids. In general, our terrestrial orchids are difficult to grow, so it's interesting that some have begun to appear spontaneously in recent years.

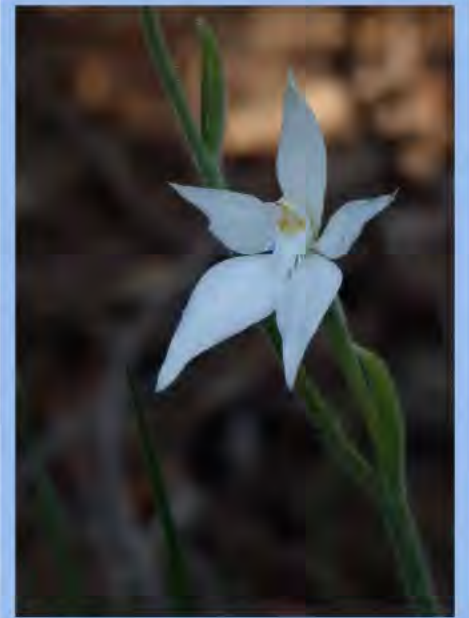


Common Mignonette Orchid
Microtis media

Around 1980 this species appeared spontaneously in the bush garden of the previous WA Herbarium.

The first was a common mignonette orchid, *Microtis media* 'common mignonette'. It showed up in my garden about ten years ago and now comes up every year, usually in a different spot indicating that it is behaving as an annual plant. It has appeared in my woodland, between paving blocks and one even in the high gutter of the upper storey. This species showed an early tendency to weediness – in the Western Australian Herbarium is a specimen collected by B.T. Goadby in October 1932 in Harvey Street, Buckland Hill (now Mosman Park), with a note that it came up in his lawn.

Three years ago, I was given a plant of *Caladenia latifolia* 'pink fairy'. It flowered in 2020 but did not set seed and failed to appear the following year. However, in 2021, two plants came up in a different part of the garden, both white-flowered, and this year this has expanded to nine plants. Yet to see what colour they will be.



"Pink" Fairy Orchid
(White variant)
Caladenia latifolia



Finally, last year, two plants of the *Pterostylis nana* group came up and flowered in a very shaded spot. They have appeared again this year, presumably the same two plants.

We have an introduced orchid, of course, *Disa bracteata* from South Africa, first recorded near Albany in 1944. For many years it was a 'sleeper', moving no further than Denmark, but at some point, around 1965–70, it began spreading and now can be seen north to Geraldton and east to Esperance. It's common in the campus grounds of Murdoch University.

Orchids in my garden:

- *Caladenia latifolia*
- *Microtis media*
- *Pterostylis* 'nana'

Would that I had those "weeds" in my garden!

(Editorial comment)

PINK BUNNY ORCHIDS

Jules Guthridge

Recently a fellow orchid enthusiast and I visited an area that had been burnt in a prescribed burn last spring in Dunsborough, and we were pleasantly surprised to find six or seven *Eriochilus scaber* subsp *scaber* (pink bunny) orchids. They were mostly growing singularly under grass trees and were about 7-10 cm high.

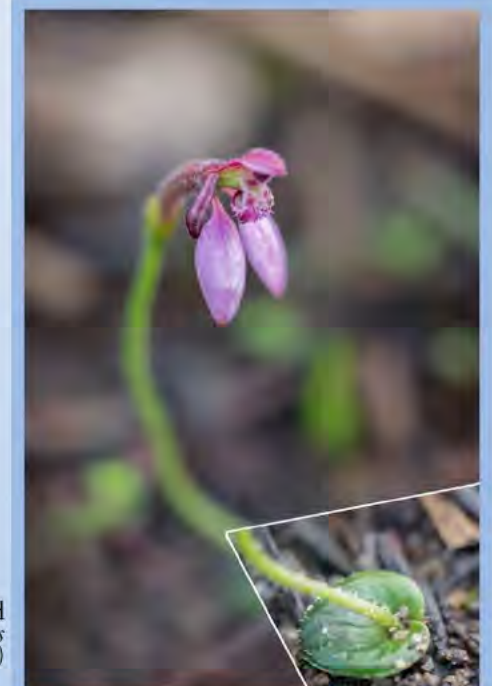
The next day she returned and found the rare *Eriochilus scaber* subsp *orbifolius*, (round-leafed bunny) in the same area! It is a new location for this one, usually only seen in Walpole, so we were pretty excited about it.

Just the one plant was found, but we will be returning in the hope of finding more so we can confirm a new population.

This is an area we have looked in many, many times and this was the first time we have seen any pink bunnies there, no doubt due to the burn. Very tricky to spot but both species firsts for us so very rewarding.



Pink Bunny Orchid
Eriochilus scaber subsp *scaber*



Pink Bunny Orchid
Eriochilus scaber subsp *orbifolius*
(with circular leaf)

A JOURNEY THROUGH NOSSA AND THE WILD ORCHID WATCH

As noted on the back page, the August meeting will be a formal general meeting with our guest speaker being South Australian based WANOSCG member Rosalie Lawrence.

Rosalie will be taking us on “A Journey through NOSSA and the Wild Orchid Watch” with NOSSA standing for Native Orchid Society of South Australia, and Wild Orchid Watch a national citizen science project designed to collect, record, and share scientific information about Australian orchids.

Rosalie and husband, Robert, have a business (Heritage Bushcare) in bush weed control. Rosalie has been a member of NOSSA since 2004 and is the NOSSA webmaster. She is particularly interested in the area of orchid education and citizen science.

FLOWERING IN AUGUST

Cons status	Common name	Species	Date Start	Date Finish	Distribution
	Carousel Spider Orchid	<i>Caladenia arenicola</i>	01-Aug	01-Oct	Lancelin to Yarloop, Swan Coastal Plain
	Reaching Spider Orchid	<i>Caladenia arrecta</i>	15-Jul	15-Oct	Bindoon to Esperance
	Granite Mantis Orchid	<i>Caladenia attingens</i>	31-Aug	01-Oct	Peak Charles to Balladonia
		subsp. <i>effusa</i>			
	Small Mantis Orchid	<i>Caladenia attingens</i>	31-Aug	01-Oct	Jerramungup to Israelite Bay
		subsp. <i>gracillima</i>			
T	Small Dragon Orchid	<i>Caladenia barbarella</i>	15-Aug	15-Sep	Ajana to Nerren Nerren Station
	Limestone Spider Orchid	<i>Caladenia bicalliata</i>	01-Aug	01-Oct	Israelite Bay to Kalbarri, coastal
		subsp. <i>bicalliata</i>			
	Shy Limestone Spider Orchid	<i>Caladenia bicalliata</i>	01-Aug	01-Sep	William Bay to Israelite Bay, coastal
		subsp. <i>cleistogama</i>			
P1	Yerina Springs Spider Orchid	<i>Caladenia bigeminata</i>	31-Jul	31-Aug	Port Gregory (North of)
	Short-sepalld Spider Orchid	<i>Caladenia brevisura</i>	01-Aug	30-Sep	Ravensthorpe to Israelite Bay
T	Dwarf Spider Orchid	<i>Caladenia bryceana</i>	01-Aug	01-Oct	Boyup Brook to Boxwood Hills
		subsp. <i>bryceana</i>			
T	Northern Dwarf Spider Orchid	<i>Caladenia bryceana</i>	01-Aug	01-Sep	Northampton to Nerren Nerren Station
		subsp. <i>cracens</i>			
T	Cape Mustard Orchid	<i>Caladenia caesarea</i>	15-Aug	15-Sep	Dunsborough to Cape Naturaliste
		subsp. <i>maritima</i>			
	Zebra Orchid	<i>Caladenia cairnsiana</i>	01-Aug	01-Nov	Esperance to Lancelin
	Arrowsmith Spider Orchid	<i>Caladenia crebra</i>	15-Jul	30-Sep	Jurien Bay to Dongara, near coastal areas
P1	Crested Spider Orchid	<i>Caladenia cristata</i>	01-Aug	30-Sep	Damboring to Coorow
	Reclining Spider Orchid	<i>Caladenia cruscula</i>	15-Aug	30-Sep	Salmon Gums to Mt Ragged
	Esperance King Spider Orchid	<i>Caladenia decora</i>	15-Aug	31-Oct	Bremer Bay to Cape Arid, near coastal areas
P1	Alabaster Spider Orchid	<i>Caladenia denticulata</i>	01-Aug	01-Oct	Cooljaroo to Arrowsmith
		subsp. <i>albicans</i>			
	Yellow Spider Orchid	<i>Caladenia denticulata</i>	01-Aug	01-Oct	Waroona to Eneabba, inland to Lake Moore
		subsp. <i>denticulata</i>			
	Clumped Spider Orchid	<i>Caladenia denticulata</i>	01-Aug	30-Sep	Waroona, Kojonup to Watheroo
		subsp. <i>rubella</i>			
	Chameleon Spider Orchid	<i>Caladenia dimidia</i>	01-Jul	30-Sep	Paynes Find to Norseman
	Dancing Orchid	<i>Caladenia discoidea</i>	01-Aug	01-Oct	Israelite Bay to Kalbarri
	Purple-veined Spider Orchid	<i>Caladenia doutchiaie</i>	01-Aug	15-Oct	Mullewa to Ravensthorpe
T	Hinged Dragon Orchid	<i>Caladenia drakeoides</i>	15-Aug	01-Oct	Bonnie Rock to Coorow
P1	Patricia's Spider Orchid	<i>Caladenia dundasiae</i>	15-Jul	31-Aug	Watheroo to Barbarton
T	Elegant Spider Orchid	<i>Caladenia elegans</i>	15-Jul	31-Aug	Northampton to Nerren Nerren Station, scattered populations
	Red Thread Spider Orchid	<i>Caladenia erythronema</i>	15-Aug	01-Oct	Nyabing to Mukinbudin, also east to Southern Cross
	Salt Lake Spider Orchid	<i>Caladenia exilis</i> subsp. <i>exilis</i>	15-Jul	30-Sep	Woodanilling to Mullewa
	Moora Spider Orchid	<i>Caladenia exilis</i> subsp. <i>vanleeuwenii</i>	01-Jul	15-Sep	Mogumber to Wongan Hills
	Fringed Mantis Orchid	<i>Caladenia falcata</i>	15-Aug	15-Oct	Wongan Hills to Jerramungup
	Rusty Spider Orchid	<i>Caladenia ferruginea</i>	15-Aug	15-Oct	Perth to Albany
	Blood Spider Orchid	<i>Caladenia filifera</i>	01-Aug	01-Oct	Tenterden to Wongan Hills
	Cowslip Orchid	<i>Caladenia flava</i> subsp. <i>flava</i>	01-Jul	01-Dec	Geraldton to Israelite Bay
	Kalbarri Cowslip Orchid	<i>Caladenia flava</i> subsp. <i>maculata</i>	01-Jul	01-Sep	Shark Bay to Perenjori
	Brookton Highway Spider Orchid	<i>Caladenia fluvialis</i>	15-Aug	01-Oct	Williams to York
	Crimson Spider Orchid	<i>Caladenia footeana</i>	15-Jul	01-Oct	Cranbrook to Binnu, also Hyden, Norseman Rd
	Grass-leafed Spider Orchid	<i>Caladenia graminifolia</i>	15-Aug	30-Sep	Mt Manypeaks to Israelite Bay
	Dwarf Common Spider Orchid	<i>Caladenia hiemalis</i>	15-Jun	15-Aug	Jurien Bay to Tenterden
	Sugar Candy Orchid	<i>Caladenia hirta</i> subsp. <i>hirta</i>	31-Aug	01-Nov	Arrowsmith to Albany
	Pink Candy Orchid	<i>Caladenia hirta</i> subsp. <i>rosea</i>	30-Jun	30-Sep	Kalbarri to Israelite Bay
T	Hoffman's Spider Orchid	<i>Caladenia hoffmanii</i>	01-Aug	30-Sep	Geraldton to the Murchison River
	Cream Spider Orchid	<i>Caladenia horistes</i>	01-Aug	01-Oct	Fitzgerald River National Park to Balladonia
	Glistening Spider Orchid	<i>Caladenia incensum</i>	15-Jul	15-Sep	Hyden to Nerren Nerren Station
	Puppet Orchid	<i>Caladenia incrassata</i>	01-Aug	30-Sep	Paynes Find ato Southern Cross
	Pink Fairy	<i>Caladenia latifolia</i>	01-Aug	01-Nov	Kalbarri to israelite Bay
	Small-lipped White Spider Orchid	<i>Caladenia longicauda</i>	01-Aug	15-Sep	Eneabba to Gingin, also near Wongan Hills to Mingenew
		subsp. <i>albella</i>			
	Daddy-long-legs White Spider Orchid	<i>Caladenia longicauda</i>	01-Jul	30-Sep	Cataby to the Murchison River
		subsp. <i>borealis</i>			
	Esperance White Spider Orchid	<i>Caladenia longicauda</i>	01-Aug	01-Oct	Cape Arid National Park to Jerramungup
		subsp. <i>crassa</i>			

Cons status	Common name	Species	Date Start	Date Finish	Distribution
P1	Stark White Spider Orchid	<i>Caladenia longicauda</i> subsp. <i>eminens</i>	01-Aug	01-Oct	Moora to Esperance, most common Tenterden to Jerramungup
	Island White Spider Orchid	<i>Caladenia longicauda</i> subsp. <i>insularis</i>	01-Aug	30-Sep	Esperance (East of)
P2	White Spider Orchid	<i>Caladenia longicauda</i> subsp. <i>longicauda</i>	01-Aug	31-Oct	Lancelin to south of Perth, Swan Coastal Plain, Perth to Albany, jarrah forest
	Little White Spider Orchid	<i>Caladenia longicauda</i> subsp. <i>minima</i>	31-Jul	31-Aug	Yuna (SE of)
	Pallarup White Spider Orchid	<i>Caladenia longicauda</i> subsp. 'Pallarup Rock'	01-Aug	15-Oct	Allocasuarina thickets around granite outcrops between Pallarup Rock and Mt Madden
	Rigid White Spider Orchid	<i>Caladenia longicauda</i> subsp. <i>rigidula</i>	15-Aug	01-Oct	Ravensthorpe to Israelite Bay
P1	Green-comb Spider Orchid	<i>Caladenia longifimbriata</i>	01-Aug	30-Sep	Jerramungup to Esperance
	Blushing Spider Orchid	<i>Caladenia lorea</i>	15-Aug	01-Oct	Yanchep to Leeman, also Capel area south of Bunbury
T	Leaping Spider Orchid	<i>Caladenia macrostylis</i>	01-Aug	01-Nov	Albany to Bindoon
	Ballerina Orchid	<i>Caladenia melanema</i>	01-Aug	15-Sep	Pingrup- Lake Grace area
	South Coast Spider Orchid	<i>Caladenia meridionalis</i>	01-Jul	15-Aug	Augusta to Albany, coastal
	Narrow-lipped Dragon Orchid	<i>Caladenia mesocera</i>	15-Aug	01-Oct	Pingarup to Paynes Find
P2	Western Wispy Spider Orchid	<i>Caladenia microchila</i>	15-Jul	01-Oct	Kondinin to Madura
	Exotic Spider Orchid	<i>Caladenia nivalis</i>	31-Aug	15-Oct	Cape Naturaliste (South of)
	Noble Spider Orchid	<i>Caladenia nobilis</i>	01-Jul	15-Oct	Capel to Kalbarri
	Ruby Spider Orchid	<i>Caladenia occidentalis</i>	01-Aug	15-Sep	Bunbury to Arrowsmith
	Dwarf Zebra Orchid	<i>Caladenia pachychila</i>	31-Jul	30-Sep	Nerren Nerren Station to Mt Ragged
	Ironcaps Spider Orchid	<i>Caladenia paradoxa</i>	01-Aug	01-Oct	Wubin to Norseman
P2	Pendant Spider Orchid	<i>Caladenia pendens</i> subsp. <i>pendens</i>	15-Aug	01-Oct	Wongan Hills to Walpole, also Mt Gibson area
	Slender Sepaled Spider Orchid	<i>Caladenia perangusta</i>	30-Aug	01-Oct	Collie to Franklto
P2	Rock Spider Orchid	<i>Caladenia petrensis</i>	31-Jul	30-Sep	Canna to Paynes Find
	Yuna Spider Orchid	<i>Caladenia pluvialis</i>	01-Aug	01-Sep	Yuna-Mullewa area east of Northampton
	Slender Spider Orchid	<i>Caladenia pulchra</i>	15-Aug	01-Oct	Pithara to Jerramungup
	Drooping Spider Orchid	<i>Caladenia radialis</i>	01-Aug	01-Oct	Northampton to Jerramungup
	Perenjori Spider Orchid	<i>Caladenia remota</i> subsp. <i>parva</i>	15-Jul	15-Sep	Wubin to Perenjori
	Outback Spider Orchid	<i>Caladenia remota</i> subsp. <i>remota</i>	15-Jul	15-Sep	Bonnie Rock to Eurardy Station
	Pale Pink Fairy	<i>Caladenia reptans</i> subsp. <i>impensa</i>	01-Jul	31-Aug	Geraldton to Eurardy Station, north of the Murchison River
	Little Pink Fairy	<i>Caladenia reptans</i> subsp. <i>reptans</i>	01-Jul	01-Oct	Northampton to Esperance
	Clown Orchid	<i>Caladenia roei</i>	01-Aug	01-Oct	Eurardy Station to Ravensthorpe
	Banded Ironstone Spider Orchid	<i>Caladenia saxicola</i>	31-Jul	01-Sep	Diemals Station to Coolgardie
	Sigmoid Spider Orchid	<i>Caladenia sigmoidea</i>	01-Jul	30-Sep	Mt Jackson to Mt Ragged
	Bindoon Spider Orchid	<i>Caladenia</i> sp. 'Bindoon'	15-Jul	31-Aug	Bindoon - Wannamal area
	Eborall's Spider Orchid	<i>Caladenia</i> sp. 'Bulbarnet'	15-Aug	30-Sep	Moora to Mogumber
	Scrub Spider Orchid	<i>Caladenia</i> sp. 'east of Esperance'	01-Aug	31-Aug	Esperance to Cape Arid
	Kellerberrin Wispy Spider Orchid	<i>Caladenia</i> sp. 'Kellerberrin'	15-Aug	15-Sep	Woodlands north of Kellerberrin
	Western Wheatbelt Spider Orchid	<i>Caladenia</i> sp. 'western Wheatbelt'	01-Aug	30-Sep	Merredin to Corrigin
P4	Sandplain White Spider Orchid	<i>Caladenia speciosa</i>	15-Aug	15-Oct	Mundijong to Boyanup, also south to Donnybrook and east to Lake Muir
P2	Start's Spider Orchid	<i>Caladenia startiorum</i>	31-Aug	15-Oct	Mt Barker to the Porongorup Range
	Tenterden Yellow Spider Orchid	<i>Caladenia straminichila</i>	01-Aug	01-Oct	Porongorup Range to Manjimup
P1	Lake Muir Spider Orchid	<i>Caladenia validinervia</i>	15-Aug	31-Oct	Collie to Rocky Gully
	Common Spider Orchid	<i>Caladenia varians</i>	01-Jul	15-Oct	Kalbarri to Esperance
	Mohawk Spider Orchid	<i>Caladenia voigtii</i>	01-Aug	15-Oct	Bremer Range to Balladonia
T	Kalbarri Spider Orchid	<i>Caladenia wanosa</i>	01-Aug	15-Sep	Mullewa to Kalbarri
T	William's Spider Orchid	<i>Caladenia williamsiae</i>	15-Jul	01-Sep	Near Brookton and Chinocup
	Northern Sandplain Spider Orchid	<i>Caladenia x coactescens</i>	01-Aug	30-Sep	Dongara to Jurien Bay, coastal
	Prisoner Orchid	<i>Caladenia x ericksoniae</i>	15-Aug	15-Oct	Bolgart to Katanning
	Dark-tipped Spider Orchid	<i>Caladenia x exoleta</i>	01-Aug	31-Oct	Paynes Find to Norseman
P1	Ornate Spider Orchid	<i>Caladenia x hopperi</i>	15-Aug	15-Sep	Near Pithara to west of Miling
	Spectacular Spider Orchid	<i>Caladenia x spectabilis</i>	15-Aug	31-Oct	Kalbarri to Esperance
	Tinged Spider Orchid	<i>Caladenia x suffusa</i>	01-Aug	31-Oct	Murchison River to Mt Ragged
P4	Shy Spider Orchid	<i>Caladenia x triangularis</i>	01-Aug	31-Oct	Kalbarri to Esperance
	Delicate Spider Orchid	<i>Caladenia x tryphera</i>	01-Aug	30-Sep	Holt Rock to Grasspatch

Cons status	Common name	Species	Date Start	Date Finish	Distribution
	Primrose Spider Orchid	<i>Caladenia xantha</i>	01-Jul	01-Sep	Mogumber to Kendenup, occ. Darling Scarp to the Swan Coastal Plain
T	Mallee Beard Orchid	<i>Calochilus pruinosus</i>	31-Aug	01-Oct	Hopetoun to Eyre on the Great Australian Bight
P4	Sandhill Helmet Orchid	<i>Corybas despectans</i>	01-Jul	01-Sep	Israelite Bay to Bunbury
	Crystal Helmet Orchid	<i>Corybas limpidus</i>	01-Jul	01-Sep	Walpole to Thomas River, coastal
	Common Helmet Orchid	<i>Corybas recurvus</i>	01-Jun	01-Sep	Gingin to Albany
	Busselton Helmet Orchid	<i>Corybas intuta</i>	01-Jul	31-Aug	Busselton area
	Busselton Helmet Orchid	<i>Corybas</i> sp. 'Hamersley Inlet'	01-Jul	31-Aug	Busselton area
	Dainty Blue Orchid	<i>Cyanicula amplexans</i>	01-Aug	01-Oct	North of Kalbarri to Norseman
P3	Western Tiny Blue Orchid	<i>Cyanicula aperta</i>	01-Aug	01-Oct	Dumbleyung to Mt Ragged
	Fragrant China Orchid	<i>Cyanicula fragrans</i>	15-Aug	30-Sep	Mt Magnet to Beacon
	Blue China Orchid	<i>Cyanicula gemmata</i>	01-Aug	01-Nov	Kalbarri to Israelite Bay
	Silky Blue Orchid	<i>Cyanicula sericea</i>	01-Aug	01-Oct	Esperance to Jurien Bay
	Northern China Orchid	<i>Cyanicula</i> sp. 'northern'	01-Aug	31-Aug	Heathland between Badgingarra and Dongara
	Midge Orchid	<i>Cyrtostylis huegelii</i>	01-Jul	30-Sep	Kalbarri to east of Esperance
	Mosquito Orchid	<i>Cyrtostylis robusta</i>	15-Jun	31-Aug	Perth to Israelite Bay, also north of Esperance
	Cape Mosquito Orchid	<i>Cyrtostylis</i> sp. 'Cape Naturaliste'	01-Aug	30-Sep	Dunsborough to Conto Beach, Leeuwin Naturaliste Ridge
	Native dendrobium	<i>Dendrobium dicuphum</i>	01-Jun	31-Aug	Liverpool River in NT to Kimberley region, WA
	Western Wheatbelt Donkey Orchid	<i>Diuris brachyscapa</i>	01-Jul	30-Sep	York, Tenterden to Ravensthorpe, mainly east of Albany Hwy
P2	Short-nosed Donkey Orchid	<i>Diuris brevis</i>	30-Jul	30-Sep	Perth (South of)
	South Coast Donkey Orchid	<i>Diuris brockmanii</i>	15-Jun	01-Aug	Munglinup to Denmark
	Winter Donkey Orchid	<i>Diuris brumalis</i>	15-Jun	31-Aug	Perth to Collie
	Sedge-loving Donkey Orchid	<i>Diuris carecta</i>	15-Aug	01-Oct	Binnu to Nerren Nerren Sta, N of Murchison River and inland to E Yuna NR
	Spectacled Donkey Orchid	<i>Diuris conspicillata</i>	01-Aug	30-Sep	Esperance area
	Common Donkey Orchid	<i>Diuris corymbosa</i>	01-Aug	31-Oct	Gingin to Bunbury, inland to Brookton
	Kemerton Donkey Orchid	<i>Diuris cruenta</i>	15-Aug	30-Sep	Lake Clifton to Capel, near coastal areas
	Common Bee Orchid	<i>Diuris decremenda</i>	15-Aug	30-Sep	Perth (North of) to Esperance (East of)
	Yellow Granite Donkey Orchid	<i>Diuris hazeliae</i>	01-Aug	30-Sep	Paynes Find to Balladonia
	Green Range Donkey Orchid	<i>Diuris littoralis</i>	01-Jul	01-Sep	Denmark to Esperance, coastal and near coastal
	Pansy Orchid	<i>Diuris magnifica</i>	01-Aug	01-Oct	Mandurah to Lancelin
	Northern Coastal Donkey Orchid	<i>Diuris oraria</i>	15-Jul	31-Aug	Kalbarri to north of the Zuytdorp Cliffs
	Pale Donkey Orchid	<i>Diuris pallescens</i>	15-Aug	30-Sep	Moor to Mingenew
	Yalgorup Donkey Orchid	<i>Diuris porphyrochila</i>	31-Aug	01-Oct	Mandurah to Bunbury (possibly to Margaret River)
	Small-flowered Donkey Orchid	<i>Diuris porrifolia</i>	31-Jul	30-Sep	Perth to Boyup Brook, between Albany Hwy and SW Hwy
	Beautiful Donkey Orchid	<i>Diuris pulchella</i>	15-Jul	30-Sep	Salmon Gums, Esperance to Balladonia
P4	Mini Donkey Orchid	<i>Diuris recurva</i>	01-Jul	31-Aug	Badgingarra to Kalbarri
	Dainty Donkey Orchid	<i>Diuris refracta</i>	31-Jul	01-Sep	Bindoon to Northampton
	Northampton Bee Orchid	<i>Diuris segregata</i>	01-Aug	01-Sep	Eneabba to Kalbarri
	Northern Bee Orchid	<i>Diuris septentrionalis</i>	15-Aug	15-Sep	Regans Ford to Kalbarri
	Northampton Donkey Orchid	<i>Diuris</i> sp. 'Augusta'	01-Aug	15-Sep	Geralton to Kalbarri
	Rock-Loving Donkey Orchid	<i>Diuris</i> sp. 'Scaddan'	01-Jul	01-Sep	Scaddan to Hyden
	Little Williams Donkey Orchid	<i>Diuris</i> sp. 'Williams'	01-Aug	01-Sep	Williams area
	Mottled Donkey Orchid	<i>Diuris suffusa</i>	31-Aug	30-Sep	Bencubbin, Trayning, Wyalkatchem to Koorda
	Arrowsmith Pansy Orchid	<i>Diuris tinkeri</i>	31-Jul	30-Sep	Yanchep to Geraldton
T	Kneeling Hammer Orchid	<i>Drakaea concolor</i>	01-Aug	30-Sep	Watheroo to Kalbarri
	King-in-his-carriage	<i>Drakaea glyptodon</i>	15-Aug	31-Oct	Eneabba to Esperance
	Slender Hammer Orchid	<i>Drakaea gracilis</i>	01-Aug	31-Oct	Bindoon to Bremer Bay
	Warty Hammer Orchid	<i>Drakaea livida</i>	15-Aug	15-Oct	Fitzgerald River National Park to Watheroo
		<i>Drakaea</i> sp. 'coastal plain'	01-Aug	31-Oct	Heathy open forest on the coastal plain south of Perth
	Purple Enamel Orchid	<i>Elythranthera brunonis</i>	01-Aug	01-Nov	Kalbarri to Israelite Bay
	Sugar Orchid	<i>Ericksonella saccharata</i>	01-Aug	30-Sep	Paynes Find to Israelite Bay
P2	Round-leaf Pink Bunny Orchid	<i>Eriochilus scaber</i> subsp. <i>orbifolius</i>	01-Jul	31-Aug	Walpole
	Pink Bunny Orchid	<i>Eriochilus scaber</i> subsp. <i>scaber</i>	01-Jul	01-Sep	Jurien Bay to Cape Arid National Park
P3	Kimberley grass orchid	<i>Eulophia bicallosa</i>	01-Aug	31-Dec	Kimberley region, King Leopold Range to Kalumburu
	Slender Mignonette Orchid	<i>Microtis eremaea</i>	31-Aug	31-Oct	Balladonia to Cue
	Common Mignonette Orchid	<i>Microtis media</i> subsp. <i>media</i>	30-Aug	31-Jan	Shark Bay to Eyre
	Dark Mignonette Orchid	<i>Microtis orbicularis</i>	31-Aug	31-Dec	Dongara to Cape le Grand, east of Esperance
	Flying Duck Orchid	<i>Paracaleana nigrita</i>	01-Aug	31-Oct	Eneabba to Esperance
	Smooth-billed Duck Orchid	<i>Paracaleana terminalis</i>	01-Aug	15-Sep	Lake Pinjarega to Nerren Nerren Station, north of Murchison River; and Wongan Hills

Cons status	Common name	Species	Date Start	Date Finish	Distribution
	Blue Fairy Orchid	<i>Pheladenia deformis</i>	31-May	31-Oct	Murchison River to Israelite bay
	Tall Leek Orchid	<i>Prasophyllum elatum</i>	15-Aug	01-Nov	Kalbarri to Israelite Bay
	Fringed Leek Orchid	<i>Prasophyllum fimbria</i>	01-Jun	30-Sep	Kalbarri to Esperance
	Little Laughing Leek Orchid	<i>Prasophyllum gracile</i>	01-Jul	31-Oct	Shark Bay to Eyre
	Yawning Leek Orchid	<i>Prasophyllum hians</i>	31-Aug	15-Nov	Dongara to Israelite Bay
	Inland Leek Orchid	<i>Prasophyllum macrotyts</i>	01-Aug	31-Oct	Kalbarri to Lake King
	Autumn Leek Orchid	<i>Prasophyllum parvifolium</i>	01-Jun	15-Aug	Eneabba to Manjimup, also scattered populations to Mt Ragged
	Fripled Leek Orchid	<i>Prasophyllum sargentii</i>	15-Aug	01-Oct	Kalbarri to Israelite Bay
	Rare Leek Orchid	<i>Prasophyllum</i> sp. 'Brookton Highway'	01-Aug	15-Sep	Armada to Brookton
	Crowded Leek Orchid	<i>Prasophyllum</i> sp. 'crowded'	01-Aug	15-Oct	Perth to Ravensthorpe
	Coastal Short Eared Snail Orchid	<i>Pterostylis actites</i>	21-Jul	15-Sep	Perth to Israelite Bay
	Shy Greenhood	<i>Pterostylis allantoidea</i>	01-Aug	30-Sep	Between Coolgardie, Ravensthorpe and Israelite Bay
	Helena River Snail Orchid	<i>Pterostylis angulata</i>	21-Aug	30-Oct	W of York to Waroona; in seasonally moist areas on slopes to streams and winter wet flats
	Varicoloured Banded Greenhood	<i>Pterostylis arbuscula</i>	01-Jun	31-Aug	Ravensthorpe, Brookton to north of Merredin with a disjunct population at Toolina Cove
	Crowded Banded Greenhood	<i>Pterostylis atrosanguinea</i>	01-Jun	30-Sep	Katanning to Wongan Hills
	Bird Orchid	<i>Pterostylis barbata</i>	31-Jul	30-Sep	Bindoon to Albany
	Dwarf Shell Orchid	<i>Pterostylis brevichila</i>	01-Jul	30-Sep	Hyden to Mt Ragged, also west of Woodanilling
	Short Eared Snail Orchid	<i>Pterostylis brevisepala</i>	21-Jul	07-Sep	Perth to Lancelin, near coastal areas
	Giant Snail Orchid	<i>Pterostylis brunneola</i>	15-Aug	30-Sep	Lake Toolibin area
	Cupped Banded Greenhood	<i>Pterostylis concava</i>	01-Jun	31-Aug	Bindoon to Mt Barker, also near Thomas River east of Esperance
	Darling Range Banded Greenhood	<i>Pterostylis crebriflora</i>	01-Jul	30-Sep	Darling Range near Perth with some scattered occurrences on the Swan Coastal plain
	Slender Snail Orchid	<i>Pterostylis crispula</i>	01-Jul	01-Oct	Perth to Albany, inland in higher rainfall areas with disjunct population at Banks Rock
	Robust Snail Orchid	<i>Pterostylis dilatata</i>	15-May	31-Aug	Geraldton to Toolina Cove
	Thick-sepaled Snail Orchid	<i>Pterostylis ectypha</i>	01-Aug	30-Sep	Gillingara to Walpole
	Red-sepaled Snail Orchid	<i>Pterostylis erubescens</i>	31-Jul	30-Sep	Mandurah to Albany
	Exserted Rufous Greenhood	<i>Pterostylis exserta</i>	31-Aug	31-Oct	Eneabba to Hyden
P3	Plumed Bird Orchid	<i>Pterostylis faceta</i>	01-Aug	30-Sep	Munglinup to Israelite Bay
	Dwarf Bird Orchid	<i>Pterostylis galgula</i>	01-Aug	30-Sep	Eurardy Station to Peak Charles
	Clubbed Snail Orchid	<i>Pterostylis glebosa</i>	15-Aug	30-Nov	Eneabba to Walpole
	Long Sepaled Snail Orchid	<i>Pterostylis gracillima</i>	15-Aug	01-Oct	Denmark to Windy Harbour
	Ravensthorpe Snail Orchid	<i>Pterostylis grossa</i>	01-Aug	30-Sep	Stirling Range to Esperance
	Red-veined Shell Orchid	<i>Pterostylis hamiltonii</i>	15-May	15-Aug	Toodyay to Stirling Range
P2	Herberle's Bird Orchid	<i>Pterostylis heberlei</i>	15-Aug	15-Oct	Gull Rock to Denmark
	Southwest Granite Snail Orchid	<i>Pterostylis jacksonii</i>	15-Jul	15-Sep	Walpole area
	Karri Snail Orchid	<i>Pterostylis karri</i>	01-Aug	01-Nov	Margaret River to Walpole
	Lort River Snail Orchid	<i>Pterostylis lortensis</i>	01-Aug	30-Sep	Boxwood Hill to Israelite bay
P1	Large-hooded Rufous Greenhood	<i>Pterostylis macrocalymma</i>	15-Aug	15-Oct	Galena Bridge on the Murchison River to Kalbarri
	Southern Thick-sepaled Snail Orchid	<i>Pterostylis meridionalis</i>	01-Aug	30-Sep	Cape Arid to Esperance
	Small Rosette Snail Orchid	<i>Pterostylis microphylla</i>	01-Aug	31-Oct	Augusta to Albany
	Midget Greenhood	<i>Pterostylis mutica</i>	15-Jul	15-Oct	Wongan Hills to the SA border
	Round Sepaled Greenhood	<i>Pterostylis orbiculata</i>	15-Jun	31-Aug	N of Geraldton to Bunbury, 150 kms inland; scattered between Mt Barker and Ravensthorpe
	Fawn Snail Orchid	<i>Pterostylis parva</i>	01-Jul	31-Aug	Stirling Range to Israelite Bay and inland to Southern Cross
	Broad-petalled Snail Orchid	<i>Pterostylis platypetala</i>	15-Jun	15-Aug	Kalbarri to Brookton
P2	Mount Many Peaks snail	<i>Pterostylis polyphylla</i>	01-Aug	15-Sep	Mount Manypeaks
	Mehinup Bird Orchid	<i>Pterostylis precatorea</i>	31-Aug	30-Sep	Denmark to Walpole
	Tall Snail Orchid	<i>Pterostylis pyramidalis</i>	15-Aug	15-Oct	Perth to Walpole
	Jug Orchid	<i>Pterostylis recurva</i>	01-Aug	15-Oct	Geraldton to Israelite Bay
	Curled-tongue Shell Orchid	<i>Pterostylis rogersii</i>	01-Jun	31-Aug	Binningup to Esperance, narrow coastal band
	Dark Banded Greenhood	<i>Pterostylis sanguinea</i>	01-Jun	30-Sep	Mullewa to Toolinna Cove
	Frog Greenhood	<i>Pterostylis sargentii</i>	01-Jul	31-Oct	Nerren Nerren Station to Israelite Bay
P2		<i>Pterostylis saxum</i>	01-Aug	30-Sep	Stirling and Porongorup Ranges extending to Northcliffe
	Green-veined Shell Orchid	<i>Pterostylis scabra</i>	01-May	31-Aug	Kalbarri to Esperance
		<i>Pterostylis scabrella</i>	01-Aug	15-Sep	Coastal strip between Margaret River and Albany
	Elegant Snail Orchid	<i>Pterostylis scitula</i>	01-Aug	30-Sep	Moora to Mogumber
	Hairy Stemmed Snail Orchid	<i>Pterostylis setulosa</i>	01-Jul	30-Sep	North of State Barrier Fence on NW Coast Highway to Balladonia and west to Brookton

Cons status	Common name	Species	Date Start	Date Finish	Distribution
T	Northampton Midget Greenhood	<i>Pterostylis sinuata</i>	15-Jul	31-Aug	Northampton to Mt Gregory
	Bloated Snail Orchid	<i>Pterostylis</i> sp. 'bloated snail'	15-Aug	01-Oct	Perth to Margaret River
	Coastal Snail	<i>Pterostylis</i> sp. 'coastal snail'	01-Jul	31-Aug	Bremer Bay to Israelite Bay
	Fine-Sepaled Snail Orchid	<i>Pterostylis</i> sp. 'fine sepals'	01-Aug	30-Sep	Perth to Bindoon
	Limestone Snail Orchid	<i>Pterostylis</i> sp. 'limestone'	01-Aug	30-Sep	Yanchep to Dunsborough, growing in sand over limestone.
	Kalbarri Rufous Greenhood	<i>Pterostylis</i> sp. 'Murchison'	15-Aug	15-Oct	Kalbarri to Shark Bay
	Paynes Find Rufous Greenhood	<i>Pterostylis</i> sp. 'Paynes Find'	15-Aug	30-Sep	Wubin to Mt Magnet
	Skinny Snail Orchid	<i>Pterostylis</i> sp. 'skinny'	01-Aug	30-Sep	Perth to Mt Barker
	Granite Loving Snail Orchid	<i>Pterostylis</i> sp. 'southern granites'	01-Aug	30-Sep	Manjimup to Hopetoun
	Sparse Bird Orchid	<i>Pterostylis</i> sp. 'sparse'	01-Aug	30-Sep	Dardanup to Walpole
	Eastern Swamp Snail Orchid	<i>Pterostylis telmata</i>	31-Aug	30-Sep	Esperance to Israelite Bay
	Brittle Snail Orchid	<i>Pterostylis timothyi</i>	01-Jul	30-Sep	Kojonup to Esperance and north to Babakin
P2	Long-leaved Snail Orchid	<i>Pterostylis tylosa</i>	01-Aug	07-Sep	Mt Chudalup south of Northcliffe
	Banded Greenhood	<i>Pterostylis vittata</i>	15-Apr	30-Sep	Perth to Balladonia
	Eastern Granite Snail Orchid	<i>Pterostylis voigtii</i>	01-Jul	01-Sep	Esperance to Israelite Bay
	Red Beaks	<i>Pyrorchis nigricans</i>	01-Aug	31-Oct	Shark Bay to Israelite Bay
	Lemon-scented Sun Orchid	<i>Thelymitra antennifera</i>	01-Jul	31-Oct	Shark Bay to Israelite Bay
	Lilac Sun Orchid	<i>Thelymitra cornicina</i>	31-Aug	31-Oct	Perth to Hopetoun
	Scented Sun Orchid	<i>Thelymitra macrophylla</i>	31-Aug	31-Oct	Perth to Albany
	Eastern Curly Locks	<i>Thelymitra maculata</i>	31-Jul	01-Sep	Watheroo to Ongerup
P2	Granite Sun Orchid	<i>Thelymitra petrophila</i>	15-Aug	01-Nov	Mullewa to SA
	Northern Queen of Sheba	<i>Thelymitra pulcherrima</i>	30-Jun	01-Sep	Lancelin to Dongara
	Northern Scented Sun Orchid	<i>Thelymitra</i> sp. 'Murchison'	01-Aug	30-Sep	Geraldton to Nerren Nerren Station
	Eastern Queen of Sheba	<i>Thelymitra speciosa</i>	30-Jun	30-Sep	Stirling Range to Condingup and north to Hyden and east of
	Curly Locks	<i>Thelymitra spiralis</i>	01-Aug	30-Sep	Kalbarri to Israelite Bay
	Southern Curly Locks	<i>Thelymitra uliginosa</i>	01-Aug	30-Sep	Northcliffe to Mt Manypeaks
P2	Queen of Sheba	<i>Thelymitra variegata</i>	01-Aug	30-Sep	Perth to Mount Manypeak, near coastal areas
P2	Common jewel orchid	<i>Zeuxine oblonga</i>	01-Jul	30-Sep	Kimberley region, near Kununurra

STARVED OF ORCHIDS

Pat Richards

(filling in as editor for Anne Bowerman)

The prolonged dry spell in the Perth metropolitan area coming into winter saw me getting very restless. The very few bunny orchids (*Eriochilus dilatatus* subspecies *undulatus* and *multiflorus*) that I saw out in the hills in May to the east of the city had long since given up and called time for this year, and the hares (*Leporella fimbriata*) were practically absent just showing a few leaves. When rain was finally forecast, I would anxiously check the rain radar map on the web, courtesy of the Bureau of Meteorology, and would see rain fronts approaching only for them to split over my home area and pass by to the north and south leaving the bushland still parched and dry. I was suffering from orchid withdrawal and needed a serious fix. Finally, mid-way through July, the rain deigned to fall in reasonable amounts to kick-start the wild orchids once again. At the first sunny opportunity, I headed for the hills and noted the first flush had brought out a couple of winter donkey orchids (*Diuris brumalis*), quite a few bluebeards (*Pheladenia deformis*), a rather lonely dwarf pink fairy orchid (*Caladenia reptans*) and a single small but reliable banded greenhood (*Pterostylis sanguinea*), but all in pristine condition.

A week later, I revisited that area and there were several more donkeys and, without exaggeration, thousands of bluebeards (*Pheladenia deformis*), plus, having received a tip-off from another member, found the dwarf common spider (*Caladenia hiemalis*) as mentioned overleaf. Time constraints prevented me wandering far, but it seems that the orchids are now playing catch-up with a vengeance. In past years, I have seen some 35 orchid species in that general area and, now that we have had some decent rainfall, I'm champing at the bit! I just have to make the time to visit.

THE SPIDER AND THE WASP

Pat Richards



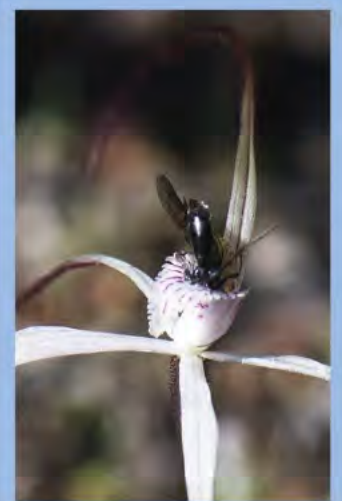
Dwarf Common Spider Orchid
Caladenia hiemalis



We have a visitor.
(Note the yellow pollen
on its back. It's been
doing the rounds.)



This looks interesting.



Maybe there's some
nectar down here.
Rats! Fooled again!



Bye, waspie!
Thanks for the pollen.

NEXT WANOSCG MEETING

The next WANOSCG meeting will be held at the Kings Park Administration Building Meeting Room on Wednesday, 17 August 2022 at 7:30 pm.

This will be a regular General Meeting.

There will be a presentation by

Rosalie Lawrence

on the topic of

“A Journey through NOSSA and the Wild Orchid Watch”

This meeting will be presented on Zoom, details of which will be sent out on the Sunday before the meeting to those who are interested in connecting.

Please contact wanoscg@gmail.com to request a link

Bulletin – Call for Articles

Please send Bulletin contributions to the editor at wanoscg@gmail.com.

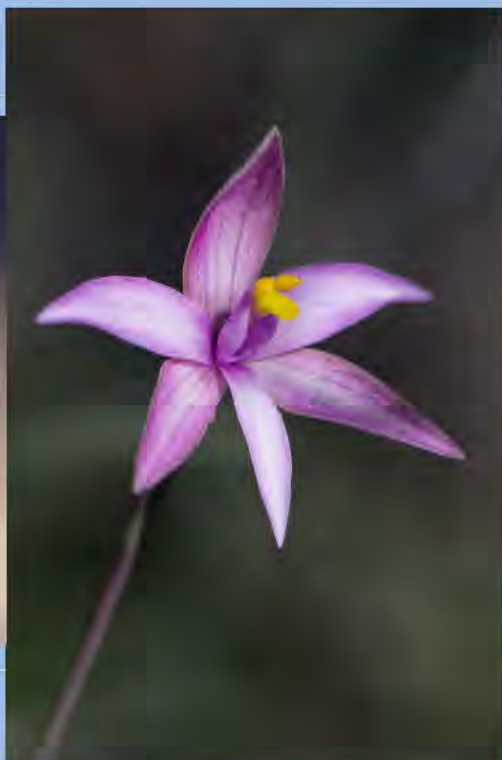
Due date for articles for the September issue will be Friday, 16 September 2022.

Copyright and Disclaimers

- All content, including images, contained in WANOSCG Bulletins (“content”) remains the property of the Western Australian Native Orchid Study and Conservation Group (Inc) (“WANOSCG”) and the original author(s).
- The content is subject to copyright and may not be reproduced in any format or medium without the written permission of the copyright owner.
- The views and/or opinions expressed in the content, or any references or links within it, are not necessarily those of WANOSCG or its committee.
- WANOSCG does not represent that the use of the content does not infringe upon the rights of third parties, nor does it guarantee that the content is complete or accurate.



Bird Orchid
Pterostylis barbata



Curly Locks
Thelymitra spiralis



Helena River Snail Orchid
Pterostylis angulata