

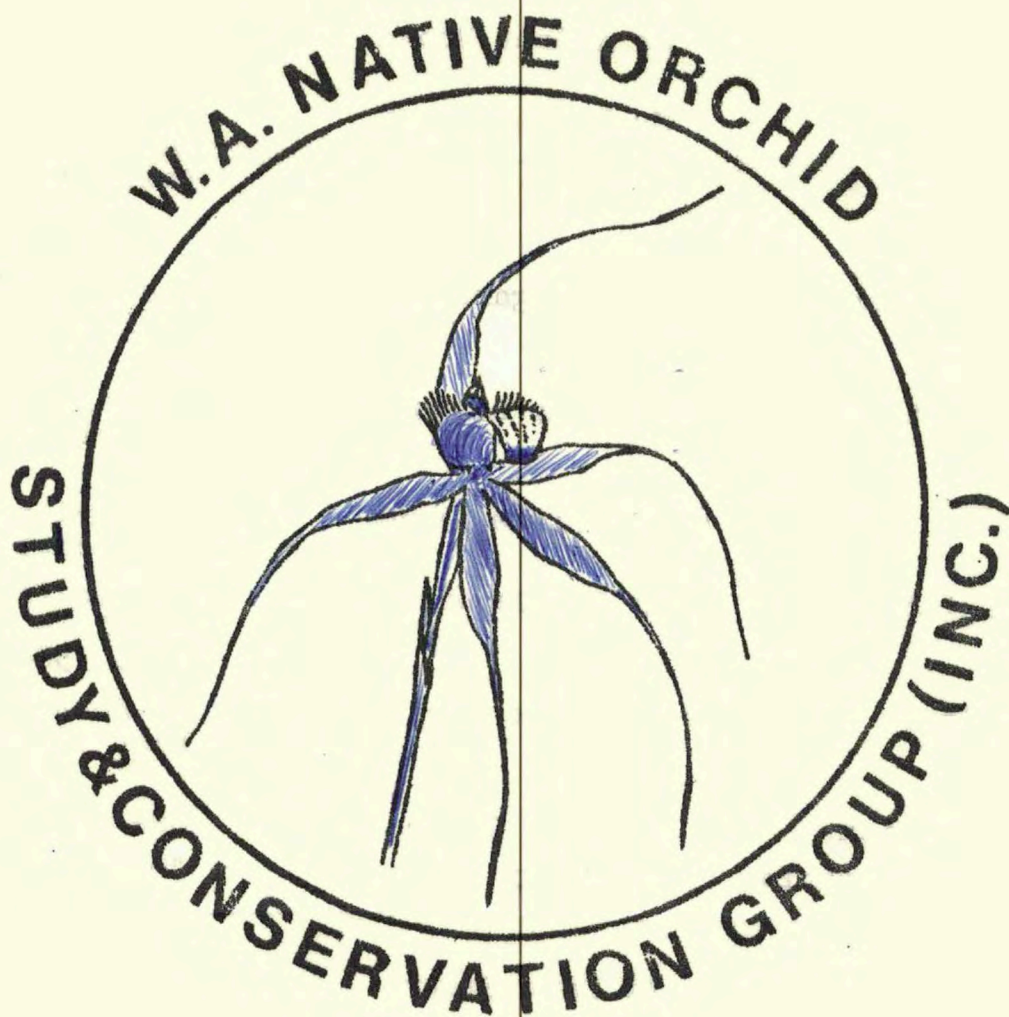
Also slides of trip.

Show slides of 2 orchids found a few weeks ago.

Two articles of rare & endangered species Cal geminata forma lutea  
trip this weekend. ✓ Syrianthus forrestii

Mrs Sharp Pres. Sargentia. ✓ (SEP 1980)

## OFFICIAL BULLETIN



Registered for posting as Category "B"

20 CENTS

OFFICE BEARERS FOR 1980

Patron: Sir Crawford Nalder K.B.

President Mrs Alison Harrington

Vice President Mr Andrew Brown

Secretary Mr Noel Hoffman

Treasurer Mrs Margaret Stewart

Committee Mrs Fay Gordon

M/s Linda Penny

Registrar Mr Roy Brown

Culture Registrar Mr Steve Hopper

Librarian Mrs Fay Gordon

Asst. Librarian Mr Terry Wilson

Reserve Warden Mr Dave Emery

Mr Mick Leece

Hon. Botanical Adviser Mr Alex George

Bulletin Editor Mr Terry Wilson



The W.A. Native Orchid Study and Conservation Group.

Objects of the Group:

- \* to promote interest in, and preserve, Western Australian indigenous orchids
- \* to learn the best means of cultivation and to do all things possible for the conservation of native orchids in their natural environment
- \* to learn their habitats and keep records
- \* to have field days and learn to recognize the different genera and species
- \* to hold meetings for the exchanging of knowledge and furthering of interest in Western Australian native orchids.

Committee Meeting:

Second Wednesday of the month. 10th September 1980 at the residence of Mrs Alison Harrington, [redacted] at 8.00pm.

General Meeting.

Third Wednesday of the month. 17th September, 1980 at 8.00pm. Film Room, Department of Agriculture, Jarrah Road, South Perth.

Speaker: Mr Alex George

Topic: Orchids of the Area East of Esperance

Alex has just returned from a field trip to this area with Mark Clements and members from our Group. He intends to show slides and discuss orchids found and new species to be named. The meeting therefore promises to be of great interest to members.

followed by a Fun Quiz. Herb Foote has made up a fun quiz on local species, so you may need to do a little homework to brush up your knowledge.

Badges - Don't forget to wear your members badge as a lucky door prize will be awarded.

Once again we would remind members to bring in any orchids you have successfully cultivated in pots.

New Members

We would like to welcome the following new members and hope their association with the Group will be both interesting and rewarding:

Mrs Nancy Verco

Mr & Mrs Bert Hocking

Mr Ric Ryan

Mrs Mary Sharpe

[redacted]  
W.A. Institute of Technology  
[redacted]

Field Trips

Please note that the Three Springs field trip planned for September has been cancelled. In place of this a trip to areas north of Perth is planned for Saturday September 13th. Members attending, should meet at the Midland Railway Station car park at 12 noon.



Walpole field trip October 11th to 13th. If you are intending to travel down to Walpole on the Friday or earlier and wish to stay at Terry Wilson's house, see him at the General Meeting on 17th September or telephone him to arrange for a key and directions on how to get to the house. Terry will be travelling down on the Friday but does not expect to arrive until about midnight.

#### TOPIC - AUGUST MEETING

One of the highlights for the year was undoubtedly the talk given by Mr Mark Clements on the cultivation of orchids from seed and a general discussion of Australian epiphytes and terrestrials. He first of all commented on the species on display, which had been cultivated in pots. Of particular interest was a number of species which had been collected in the South Eastern Wheatbelt. These were related to those found in the Eastern States and differences were pointed out.

He then spoke on his work on the cultivation of orchids from seed. In some instances he was able to achieve almost 100% germination once he was able to isolate the associated soil fungi which he cultivated and placed in a medium with the seeds. Slides were used to show how the soil fungi were present in the protocorms and therefore how they assisted nutrition. This knowledge has been of tremendous value as it has meant that many endangered species are now able to be saved from extinction.

The final part of the talk was a general discussion of both epiphytes and terrestrials found in northern and eastern Australia.

#### HELP!!

Margaret Stewart, our Treasurer will be spending October and November in the South West area, mainly between Albany and Manjimup. She would appreciate any information on 'orchid' sites and areas to visit, which may be sent to her at the address inside the front cover by October 3rd or given to her on the Walpole field trip.



## CULTIVATION - Alison Harrington

The Western Australian Native Orchid Study and Conservation Group differs from our Eastern State's sister clubs in that we have at present a minor emphasis on the home cultivation of our native terrestrials.

With the loss of Lal Shepherd we lost one of our driving forces in this field. In his memory we inaugurated this year a prize for a cultivation report. To write a report, now is the time you should be observing closely your orchids in cultivation. Included in this bulletin is a copy of the Cultivation Information Sheet and its covering instruction notes to remind you of their availability from the Cultivation Officer and to remind you that the reports will be assessed with the sheet as a basic judging framework.

Cultivation is equally valid as an aspect of both Study and Conservation, the two main objects of our Group. Cultivation is not difficult, there are many resources to help you, both within the Group and within Australia as shown in the next article.

Have a go, it is very satisfying, lots of fun - be a 'Native Orchid Cultivator'

Cultivation Officer - The Group has, since its inauguration, had a Cultivation Officer responsible for the accumulating, organizing and distribution of information on native orchid cultivation. The present Cultivation Officer is Mr Steven Hopper. The following is a summary of the types of articles which are held in the Cultivation File and may be borrowed by any member. The sources are the Bulletins of other Clubs in South Australia and Victoria and the Orcadian. All Bulletins are held in the Library but photocopies of relevant articles are in the Cultivation File.

Articles - 'Cultivation Notes' are general notes on Native Orchids specifying jobs to be done in each season and come from all three Bulletins.

Potting Details and Miscellaneous Problems - This group covers articles on potting mixtures by Western Australian and Eastern States cultivators. Also covered are types of humus, fertilizers, leaf rot, pot types and shade houses. There is also an excellent article on pH of soils and potting mixtures by Mr H.B.Wilson from the A.N.O.S. Victorian Group Bulletin.

Orchids from Seed and Tubers - The comprehensive article by Les Nesbitt from South Australia leads the information in this group. There are other additional notes by the same writer. There are summaries included of Mark Clements' work on seed cultivation at Canberra Botanic Gardens, and a copy of Mark Clements' article published in the American Orchid Society Bulletin August 1979. Flasking and deflasking is a precise art and articles have been written to help the cultivator make it more successful.

A summary of propagating orchids by Mr R. Martin of McBeans Orchids covers the four main categories - Seed, Division, Propagation of vegetative parts and Plant tissue culture.

Notes on Specific Orchid Cultivation - Orchids covered in special articles are *Corybas*, *Caladenias*, *Pterostylis* and *Pterostylis baptistii* in particular.



LIBRARY - Fay Gordon

New Addition - The National Parks of Western Australia  
by C.F.H. Jenkins 1980 1st Edition  
National Parks Authority of W.A. Perth.

Articles in Recent Bulletins available on loan from the Library

Native Orchid Society of South Australia Bulletin - May 1980

1. The two forms of *Pterostylis nana* in South Australia
2. Growing orchids in Tasmania
3. Cultivation of *Caladenias* from seed
4. *Pterostylis vittata* - description

Australasian Native Orchid Society (Victorian Group) Bulletin

- |   |                      |
|---|----------------------|
| 1. Epiphytic orchids from seed                    | June 1980            |
| 2. Pests and diseases                             | June 1980, July 1980 |
| 3. <i>Pterostylis scabra</i> - description        | June 1980            |
| 4. <i>Bulbophyllum radicans</i> - description     | June 1980            |
| 5. <i>Corybas</i> species - description           | July 1980            |
| 6. "Grass" <i>Dendrobium</i> - description        | July 1980            |
| 7. <i>Dipodium punctatum</i> - description        | May 1980             |
| 8. <i>Myrmecophila minutus</i> - description      | May 1980             |
| 9. <i>Calanthe triplacata</i> - description       | May 1980             |
| 10. <i>Sarcochilus olivaceus</i> - cultural notes | April 1980           |
| 11. Pronunciation of orchid names                 | May 1980             |
| 12. <i>Dendrobium biggibum</i> - description      | April 1980           |
| 13. Roofing material for orchid houses            | April 1980           |
| 14. Tropical terrestrials                         | April 1980           |

Also available from the Library are two comprehensive articles on  
Pronunciation of Botanical Latin. These are available at the cost  
of photocopying - 80c plus postage.

STALL

The stall was initiated as a means of exchanging plants etc between  
members and to raise funds for the Group. It has always been very

successful for the little amount of work that it entails.

Do continue to support it by bringing anything you feel might

sell or conversely by bringing some money along prepared to buy!



Registration No. \_\_\_\_\_

Orchid Name \_\_\_\_\_

Grower's Name \_\_\_\_\_

Address \_\_\_\_\_

Provincance of Plant \_\_\_\_\_

Seed ☐

Tuber ☐

Quantity ☐

Date Planted \_\_\_\_\_ mth \_\_\_\_\_ yr

Plant ☐

Quantity ☐

Pot/Ground, Media Description \_\_\_\_\_

Plants or trees in Association \_\_\_\_\_

☐ % of Shade

YEAR	1	2	3	4	5
Watering Summer					
Watering Winter					
Fertilizer Type					
Mulching Details					
1st Leaf show date					
Plant number					
Flower No.					
Date flowering					
Pollination Nat/Hand					
Parent (Reg No)					
Seed Head Set*					
Seed Collected (Date)					
Plant Number (Inc/Dec)					
Failures					
Diseases Fungi Pests					
Re-potting details					
Flowers Description					

Remarks: \_\_\_\_\_



☐ CULTIVATION SHEET INSTRUCTION NOTES

<input type="checkbox"/> REGISTRATION No.	To be placed on the pot or plot as well.
<input type="checkbox"/> ORCHID NAME	The correct botanical name for filing order for the Cultivation Officer.
ADDRESS	Place where plant is being grown.
PROVINANCE OF PLANT	Location plant normally grows.
SEED, TUBER ETC.	Tick appropriate box. Fill in quantity.
POT/GROUND	Cross out whichever does not apply.
MEDIA DESCRIPTION	All details of soil type, peat, etc.
WATERING	Tick for appropriate watering. A blank will indicate natural rainfall only.
FERTILIZER	A blank indicates none used.
POLLINATION Natural/Hand	Natural e.g. Insects Artificial e.g. hand
PARENT	Reg. No of another plant, or if from bush or other Grower.
SEED HEAD SET *	Indicates use Yes or No.
FAILURES	Include any relevant details.
DISEASES ETC.	Details of any of these problems, including poison or other measures taken.
RE-POTTING DETAILS	Any re-potting done, showing new Reg. No. if pot split up, type of pot etc.
FLOWERS	Any description that may be of interest in comparing flower size, colour etc. from year to year.

All details will regularly be collated by the Cultivation Officer and the results produced so we and any one else can learn and improve from our own, and others successes and failures, to make native Orchid growing as reliable as other cultivated plants.



FIELD TRIP TO JOHN FORREST NATIONAL PARK - Margaret Stewart

Alison Harrington and I braved the wet blustery weather on Sunday August 17th to explore areas in the John Forrest National Park. After initially deciding to cancel the venture, we spent some time at the Midland Markets stocking up on fruit and vegetables until the weather cleared.

We donned our wet weather gear after a welcome cup of coffee and headed across the old railway line to a granite outcrop opposite the main picnic area and kiosk. There are a number of different habitats on and around the rock where after an hour and a half we had found a total of eleven orchids.

1) Moss pockets on horizontal surfaces:

We found *Thelymitra antennifera* in flower with up to fifteen plants together; another sun orchid leaf sometimes in bud which I think is *Thelymitra pauciflora* and another small green elliptical leaf about 25mm long with buds showing which we could not identify.

2) Low bushes around moss patches:

There were numerous specimens of lanceolate *Thelymitra* leaves of seemingly two types: one had a very high ridge in the centre with two smaller ridges to one side and the other had two ridges equidistant from the centre, possibly *Thelymitra pauciflora*. Also found were ovoid *Thelymitra* leaves thought to be *Thelymitra crinita* and a similar one which was without ridges.

3) Large bushes and forest at base of rock:

*Diuris longifolia* was numerous, there were leaves of *Eriochilus dilatatus* and we found two flowers of *Caladenia deformis* and one of *Caladenia reptans*. At the base of a tuart tree we found three *Caladenia* plants with long hairy leaves, one was in early bud. *Thelymitra crinita* leaves were numerous in this habitat also.

After enjoying a barbecue lunch in the pouring rain, we decided to head for home and explore sites on the road out. We stopped on a laterite ridge and found a beautiful flowering specimen of *Prasophyllum fimbria* and a few *Thelymitra crinita* leaves. Further out along the road we found a good stand of sheoak trees where numerous specimens of *Pterostylis barbata* were found, a few plants were 30cm high. There were leaves of *Thelymitra crinita* and *Eriochilus dilatatus*, one *Caladenia deformis* flower and two different *Caladenias* in bud; one reddish in colour, the other hairy with clubbed sepals on the bud.

We concluded the field trip at 3.30 pm after an enjoyable and successful day, despite the inclement weather. It will be interesting to return there in about three weeks to find those budding species in flower.



CALADENIA DISCOIDEA M.Stewart

This species is found only in Western Australia where it is widespread throughout the South West and it flowers between August and November.

It was first described in Lindley's "A Sketch of the Vegetation of the Swan River Colony" (1810)

The name *discoidea* is Latin for 'disc like or rounded' and may refer to the shape of the labellum or the overall flower structure.

Common names include the Bee, Staghead or Dancing Orchid.

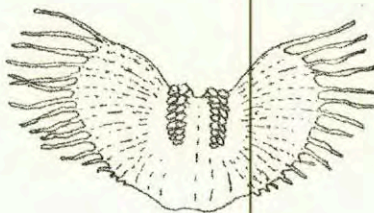
It is a very hairy plant growing to 30cm in height with a 15cm lanceolate leaf and has one to three flowers.

The flowers are yellow green with red streaks and have a blunt appearance. The 15mm dorsal sepal is narrow, incurved and concave. The 20mm lateral sepals are broad with rounded tips, spreading and recurved; the petals are slightly longer, narrow with recurved tips.

The labellum is a 10mm broad oval shape on a short claw, usually reddish in colour with dark red diverging veins and a long open fringe that shortens towards the recurved tip.

The thick oblong calli are crowded centrally but become longer and club shaped towards the base of the labellum.

The column is broadly winged in the upper half but narrow and incurved at the base where there are two yellow tipped red glands.



Labellum X 4  
from front



Side



Front

Column X 4



A.W.

Full Size